

PREMIUM LIME

Unit 3 / 283 Mandurah Road
East Rockingham WA 6168
T : 08 9419 4155
E : admin@premiumlime.com.au
W : www.premiumlime.com.au

Enquiries :
Noel Castle 0407 445 236



LIME WA INC.

Independently audited
by DPIRD.



SERVING AGRICULTURE FOR OVER 25 YEARS

Tested by a
Code of Practice
Approved Laboratory

HORVAT
ANALYTICAL

PRODUCT INFORMATION SHEET

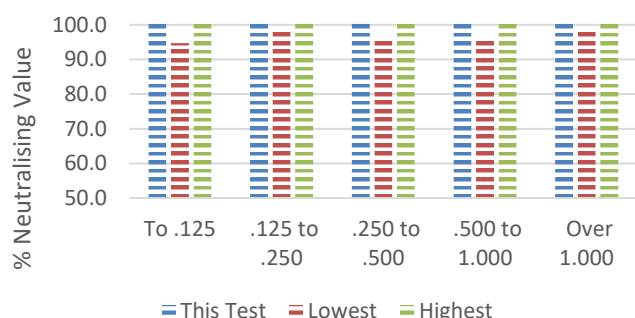
GENERAL INFORMATION

PIT NAME	Premium Lime Products	DATE	05/12/2024
LOCATION	East Rockingham	LIME WA REF. LAB NO.	LWA 25-05 LW24120305
DESCRIPTION	Slaked Lime	SCREENED SCREEN SIZE	n/a Ball Milled
WEIGH SYSTEM	Loadrite Loader Scales [Weigh system verified by licensed verifier approved by National Measurement Institute]		

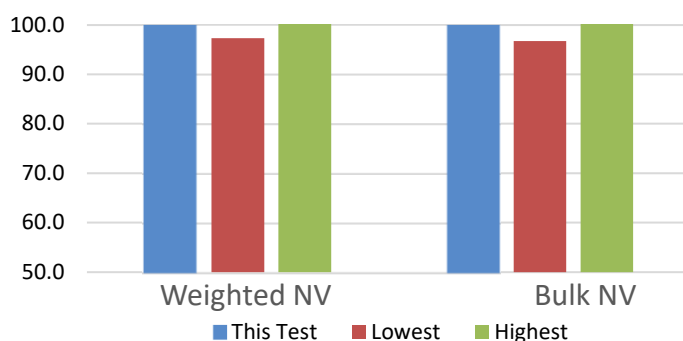
CODE OF PRACTICE APPROVED LABORATORY REPORT

SIEVE RANGE (MM)	% WEIGHT			% NEUTRALISING VALUE	
	THIS TEST	2 YEAR PIT RANGE		THIS TEST	2 YEAR PIT RANGE
0.000 - 0.125	6.6	5.3 : 6.6		104.8	94.7 : 104.8
0.125 - 0.250	9.3	9.3 : 12.5		104.8	98.4 : 104.8
0.250 - 0.500	12.1	12.1 : 18.9		104.9	96.5 : 104.9
0.500 - 1.000	15.5	14.4 : 15.5		101.2	95.4 : 101.2
> 1.000	56.5	48.9 : 56.5		101.1	98.2 : 101.1
CALCIUM (1M HCL)	38.3	38.3 : 43.4			
MAGNESIUM (1M HCL)	2.3	1.1 : 2.3			
SODIUM (1M HCL)	0.0	0.0 : 0.0			
			WEIGHTED AVE NV	102.2	97.3 : 102.2
			BULK NV	103.4	96.7 : 103.4

2 Year Comparison % NV by Sieve Range



2 Year Comparison Ave % NV



Department of
**Primary Industries and
Regional Development**

This product sample was collected by the Department of Primary Industries and Regional Development, and was submitted directly to an approved laboratory for testing as part of the Lime WA Inc. independent audit program.

DISCLAIMER & SUPPLIER STATEMENT : Although the above analysis, provided by a Lime WA Inc Agricultural Lime Industry Code of Practice approved laboratory, is a true representation of the product being supplied, the test results are for a single lime sample collected on one day. The pit range shows only the audit results obtained within the past two years, but other analyses are available on request. Lime WA Inc makes no claims and provides no guarantees on the quality or suitability of the product supplied. Product supplied by members occurs naturally and has a moisture retention capacity that varies according to seasonal conditions. As this cannot be controlled by suppliers, moisture levels are not stated. Lime WA Inc is not responsible for any claims and/or liabilities arising from the supply and/or use of these products. However, lime users are invited to contact the Association on 0419 575 737 in the event of any concerns with the product details.