

Shire of Denmark
953 South Coast Hwy

Enquiries :
Engineering Admin
T : 9848 0300

www.denmark.wa.gov.au



LIME WA INC.
Independently audited
by DPIRD.

SERVING AGRICULTURE FOR OVER 20 YEARS

*Tested by a
Code of Practice
Approved Laboratory*



PRODUCT INFORMATION SHEET

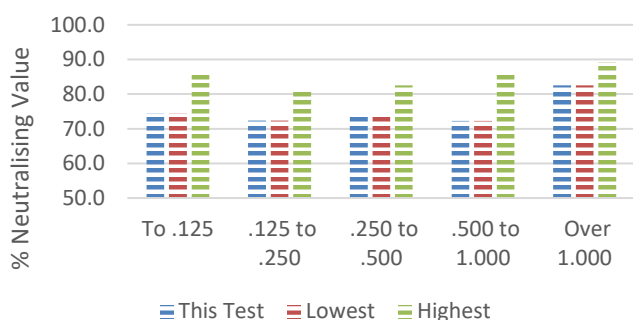
GENERAL INFORMATION

PIT NAME	Denmark Shire	DATE	May 24th 2023
LOCATION	Denmark	LAB NO. LIME WA REF.	LWA 23-11 B2305-0284-1255
DESCRIPTION	Limesand	SCREENED SCREEN SIZE	Yes 3.0 mm
WEIGH SYSTEM	Compuload Loader Scales [Weigh system verified by licensed verifier approved by National Measurement Institute]		

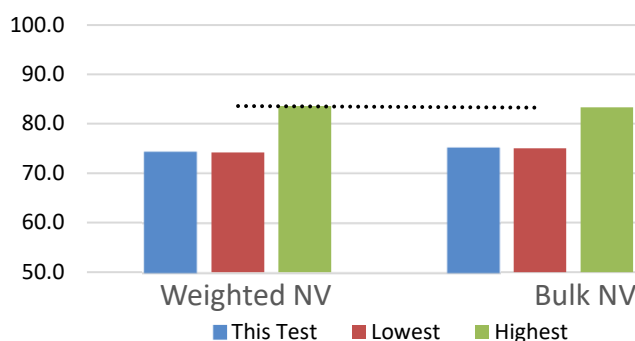
CODE OF PRACTICE APPROVED LABORATORY REPORT

SIEVE RANGE (MM)	% WEIGHT			% NEUTRALISING VALUE	
	THIS TEST	3 YEAR PIT RANGE		THIS TEST	3 YEAR PIT RANGE
0.000 - 0.125	4.5	3.7 : 7.9		74.4	74.4 : 86.5
0.125 - 0.250	31.2	29.3 : 41.5		72.4	72.4 : 81.7
0.250 - 0.500	46.8	35.2 : 46.8		73.7	73.7 : 82.5
0.500 - 1.000	6.3	6.1 : 8.5		72.3	72.3 : 86.1
> 1.000	11.2	9.3 : 13.8		82.5	82.5 : 89.2
CALCIUM (1M HCL)	30.0	30.0 : 32.2			
MAGNESIUM (1M HCL)	0.3	0.3 : 0.6			
SODIUM (1M HCL)	0.1	0.1 : 0.1			
			WEIGHTED AVE NV	74.2	74.2 : 83.6
			BULK NV	75.0	75.0 : 83.3

3 Year Comparison % NV by Sieve Range



3 Year Comparison Ave % NV



**Department of
Primary Industries and
Regional Development**

This product sample was collected by the Department of Primary Industries and Regional Development, and was submitted directly to an approved laboratory for testing as part of the Lime WA Inc. independent audit program.

DISCLAIMER & SUPPLIER STATEMENT : Although the above analysis, provided by a Lime WA Inc Agricultural Lime Industry Code of Practice approved laboratory, is a true representation of the product being supplied, the test results are for a single lime sample collected on one day. The pit ranges show audit results obtained within the past three years, but analyses over a longer timeframe are available on request. Lime WA Inc makes no claims and provides no guarantees on the quality or suitability of the product supplied. Product supplied by members occurs naturally and has a moisture retention capacity that varies according to seasonal conditions. As this cannot be controlled by suppliers, moisture levels are not stated. Lime WA Inc is not responsible for any claims and/or liabilities arising from the supply and/or use of these products. However, lime users are invited to contact the Association on 0419 575 737 in the event of any concerns with the product details.