

Watheroo Dolomitic Lime

Peter Manns 0428 922 340

Terri Manns 0418 922 340

www.dolomite.com.au



LIME WA
Independently
Audited
Lime Suppliers



Tested by a
Code of Practice
Approved Laboratory



PRODUCT INFORMATION SHEET

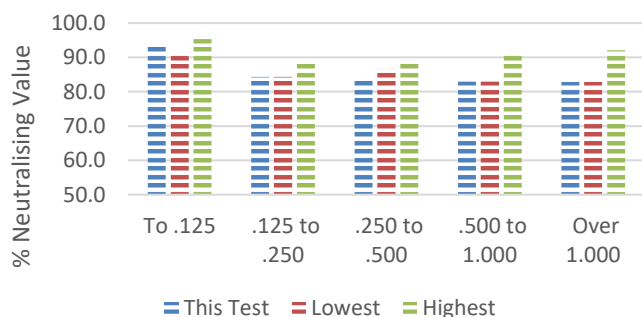
GENERAL INFORMATION

PIT NAME	Watheroo Dolomitic Lime	DATE	April 3rd 2019	
LOCATION	Watheroo	LIME WA REF. LAB NO.	JC1812	B1903-0035-2071
DESCRIPTION	Dolomitic Lime	SCREENED SCREEN SIZE	Yes	2.0mm
WEIGH SYSTEM	Compuload Loader Scales [Accredited weigh system verified by Trade Measurement Services]			

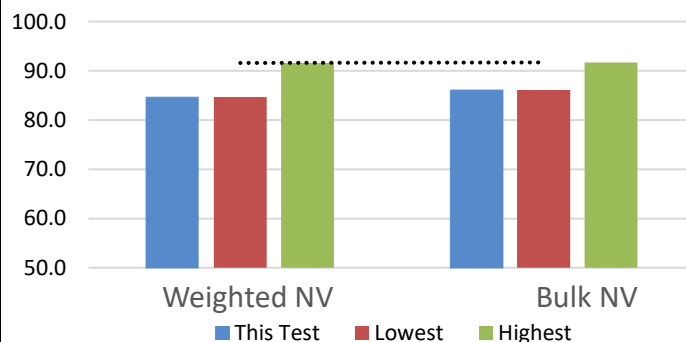
CODE OF PRACTICE APPROVED LABORATORY REPORT

SIEVE RANGE (MM)	% WEIGHT		% NEUTRALISING VALUE	
	THIS TEST	3 YEAR PIT RANGE	THIS TEST	3 YEAR PIT RANGE
0.000 - 0.125	15.6	15.6 : 21.0	93.7	91.3 : 95.3
0.125 - 0.250	9.3	9.3 : 12.4	84.3	84.3 : 88.9
0.250 - 0.500	14.0	14.0 : 15.1	83.4	86.7 : 89.0
0.500 - 1.000	20.5	17.4 : 20.5	82.9	82.9 : 90.9
> 1.000	40.7	34.6 : 40.7	82.8	82.8 : 92.1
CALCIUM (Ca) (1M HCL)	18.9	18.9 : 19.3		
MAGNESIUM (Mg) (1M HCL)	10.5	10.5 : 11.3		
SODIUM (Na) (1M HCL)	0.1	0.1 : 0.2		
WEIGHTED AVE NV			84.7	84.7 : 91.6
BULK NV			86.1	86.1 : 91.7

3 Year Comparison % NV by Sieve Range



3 Year Comparison Ave % NV



Department of
**Primary Industries and
Regional Development**

GOVERNMENT OF
WESTERN AUSTRALIA

This product sample was collected by the Department of Primary Industries and Regional Development, and was submitted directly to an approved laboratory for testing as part of the Lime WA Inc. independent audit program.

DISCLAIMER & SUPPLIER STATEMENT : The supplier states that the above analysis provided by a Lime WA Inc Agricultural Lime Industry Code of Practice approved laboratory is a true representation of the product being supplied from the nominated lime pit. Lime WA Inc requires members to provide the above details in accordance with the Code of Practice requirements but makes no claims and provides no guarantees on the quality or suitability of the product supplied. Product supplied by Lime WA Inc members occurs naturally and has a moisture retention capacity that varies according to seasonal conditions. As this cannot be controlled by suppliers, moisture level analyses are not included on this information sheet. Lime WA Inc is not responsible for any claims and/or liabilities arising from the supply and/or use of the product supplied. However, lime users are invited to contact the Association on 0419 575 737 in the event of any dissatisfaction with the product details provided by member suppliers.